

# ASTRA-A

Addressable fire alarm system



# MAIN FEATURES

- **Fast fire detection**
- **Control of evacuation system**
- **Control of smoke exhaust and fire extinguishing**

# SPECIFICATION



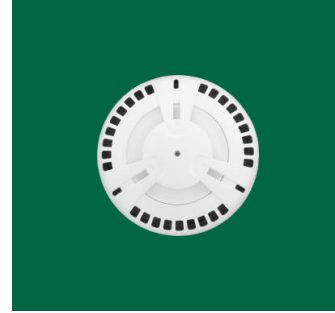
- Control panel supports up to 2000 devices
- Free topology, signaling line length up to 1 km
- No false alarms
- Free local and remote monitoring software
- Saves up to 25% on the budget



Astra-812 Pro  
CONTROL PANEL



Astra-A RPA  
SIGNALING LINE EXTENDER



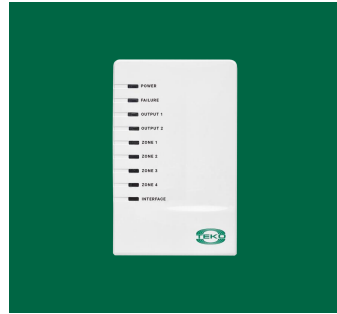
Astra-42A/43A  
SMOKE DETECTOR/  
HEAT DETECTOR



Astra-45A  
FIRE MANUAL CALL POINT



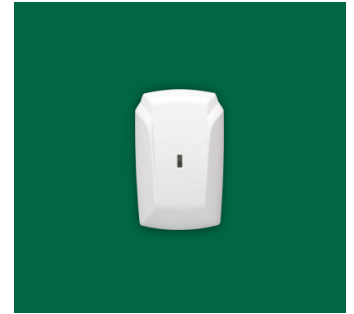
Astra-A ILS  
SHORT CIRCUIT ISOLATOR  
FOR SIGNALING LINE



Astra-BPA  
ADDRESSABLE RELAY UNIT



Astra-BRA  
VENTILATION VALVE CONTROL



Astra-MA  
HARDWIRED ZONE EXTENDER  
FOR SIGNALING LINE



## CONTROL PANEL **ASTRA-812 PRO**

- Supports up to **999** addressable devices
- Embedded radio module of 433 MHz
- Supports GSM or LAN communication modules

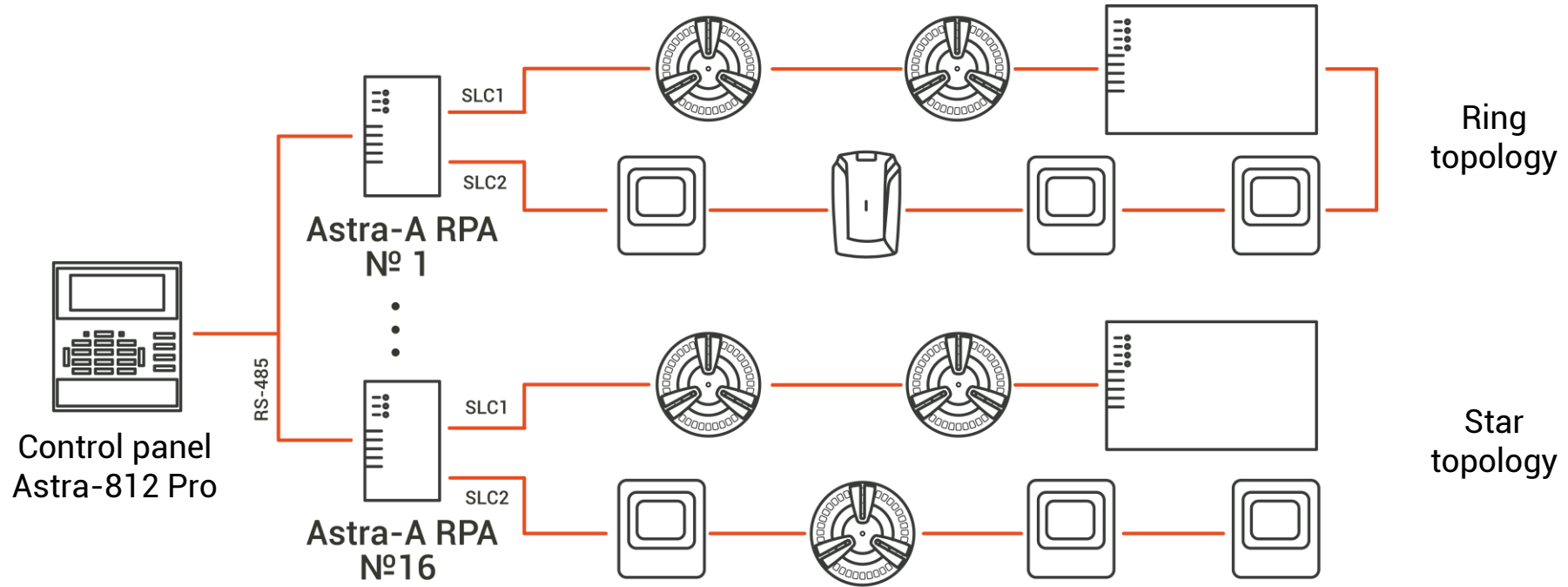
---

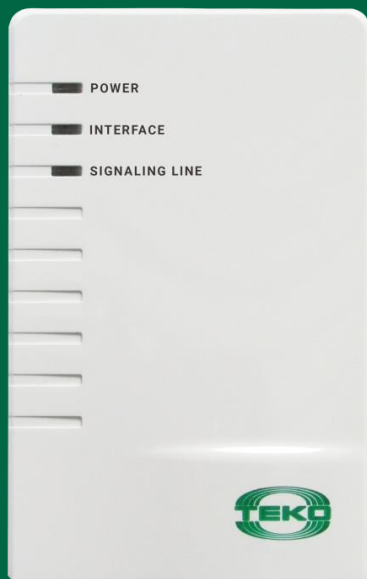
## CONTROL PANEL **ASTRA-8945 PRO**



- Supports up to **2000** addressable devices
- Embedded radio module of 2.4 GHz
- Supports GSM and LAN communication modules at the same time

# HOW IT WORKS?





## SIGNALING LINE EXTENDER ASTRA-A RPA

- 2 independent signaling lines (SLC)
- 0,35 mm cable thickness supported
- Supports up to 250 devices for both of SLC
- Line length up to 1 km
- Power supply from 11V to 27 V



## SMOKE DETECTOR **ASTRA-42A**

- Dual beam technology - for even greater precision



---

## HEAT DETECTOR **ASTRA-43A**

- Temperature range: from -30 to +70 C



# SPECIFICATION



**Dual beam technology:**

for even greater accuracy, reduces the probability of false alarms



## SHORT CIRCUIT ISOLATOR FOR SIGNALING LINE **ASTRA-A ILS**



---

## FIRE MANUAL CALL POINT **ASTRA-45A**



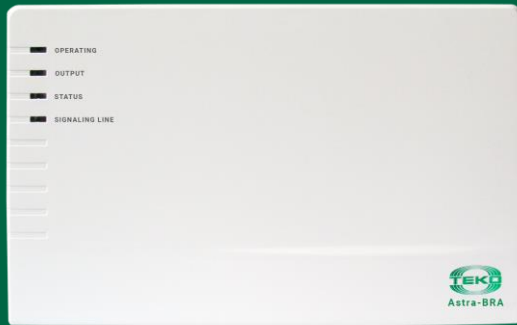
## SMOKE EXHAUST STARTING BUTTON **ASTRA-45A ver. 2**



---

## FIRE EXTINGUISHING STARTING BUTTON **ASTRA-45A ver. 3**

# ADDRESSABLE RELAY UNIT ASTRA-BRA



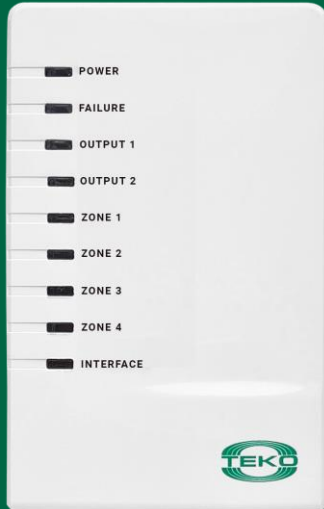
## Function

- Control of the smoke exhaust unit

## Specification

- 1 power relay (220 V, 1 A) with load control
- 2 hardwired zones for control the smoke exhaust unit status
- Tampering control
- LED indication of the device status

# ADDRESSABLE RELAY UNIT ASTRA-BPA



## Function

- Control of the evacuation system
- Control of the automation cabinets (pumps, valves and ventilation)

## Specifications

- 2 relays (28 V, 1,25A)
- 4 inputs to control the status of smoke exhaust valve switches
- Tampering control
- LED indication of the device status



## HARDWIRED ZONE EXTENDER FOR SIGNALING LINE **ASTRA-MA**

### **Function**

- Connection to the SLC of detectors with “dry contact” output

### **Specification**

- 2 hardwired zones
- Tampering control
- LED indication of the device status
- Powering from extender Astra-A RPA



# KEYPAD ASTRA-814 PRO

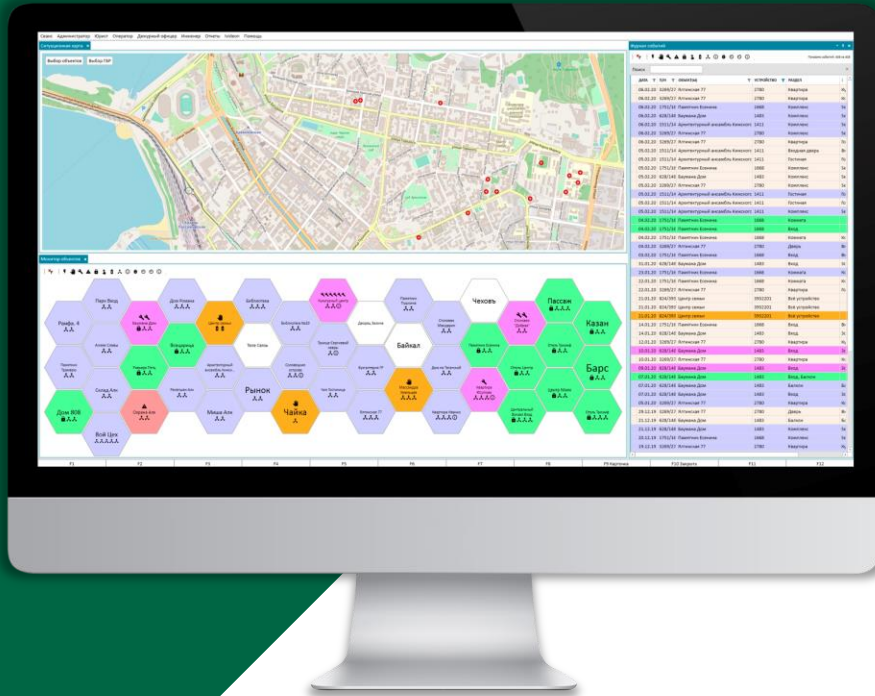


---

# INDICATION UNIT ASTRA-863 ver. A

# ASTRA-AMS

## REMOTE MONITORING SOFTWARE

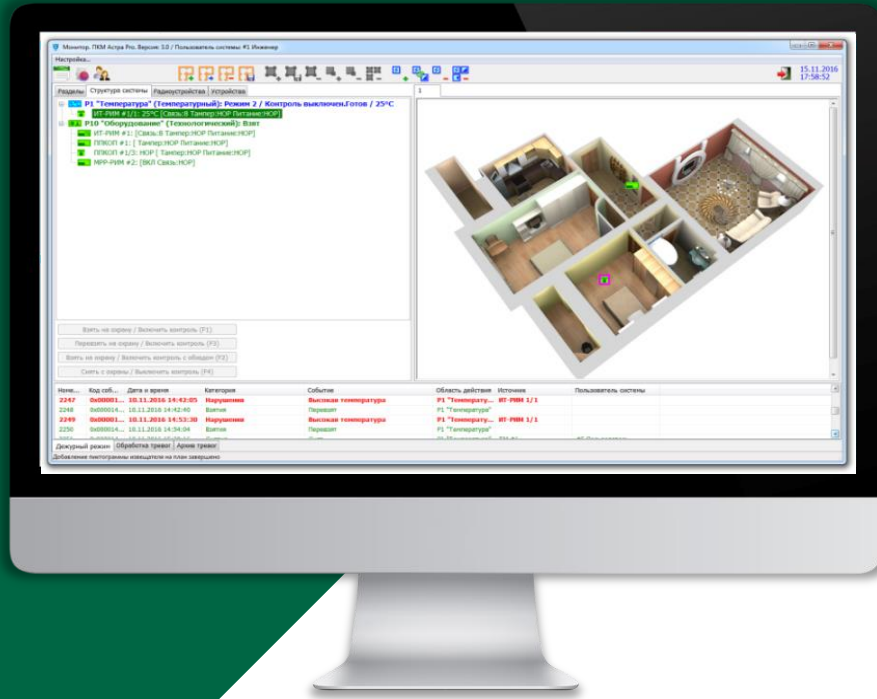


- Supported facility plans
- Multiuser
- Flexible interface
- Multiplatform (Windows, Mac, Linux)



# PKM ASTRA-PRO

## LOCAL MONITORING SOFTWARE



- Supported facility plans
- Multiuser
- Flexible interface
- Also for configuration the system

# CHOOSE OUR COMPANY



**5 years warranty**



**Technical solution**



**Technical support in  
English**



**Always in stock**



**Almost 30 years  
on the security market**

**THANK YOU**  
**CONTACT US**

**Mobile (WhatsApp, Telegram)**

+7 967 368 08 98

**Email address**

export@teko.biz

**Website**

www.teko.biz/en